



INTERMOUNTAIN PET HOSPITAL

TOTAL HEALTH WELLNESS PACKAGE

\$375 (71% off regular price)

WHY IS PREVENTIVE CARE SO IMPORTANT FOR MY PET?

1. Preventive Screening: **identify underlying health** issues that might be causing your pet pain/discomfort and affect quality of life. Most problems that are identified early can be easily corrected to improve quality and quantity of life.
2. Provides annual **intestinal parasite and heartworm** screening to protect your pet and your family from parasites.
3. Preventive screening provides a **baseline** with future which results can be compared.
4. **Peace of Mind**

Studies have shown that 39.5% of senior dogs and 65% of senior cats (>7 yrs old) that appear healthy to their owners and have a normal physical exam, have significant abnormalities on their lab work.

The Package Includes:

- Physical Examination and all vaccinations that are indicated (*excluding rattlesnake vaccine*)
- Complete Organ Function Tests (28 chemistries)
 - ✓ Kidney (SDMA), Liver, Electrolytes, Diabetes, Pancreas (spec cpl), etc.
 - ✓ Endocrine and Metabolic Disease Screening
- Thyroid Screening
- Complete Blood Count - anemia, infection, hydration (*read by a pathologist*)
- Urinalysis with UPC - urinary function, diabetes, infection, stones and bladder tumors (*obtained using ultrasound*)
- Intestinal Parasite exam and Heartworm Screening
- Tick Borne Disease Screening (canine)
- FELV/FIV test (feline)
- 10% off dental cleaning if completed within 90 days of package (extractions not included)



Any exam can be upgraded to a Total Health Package within two (2) weeks. A \$15⁰⁰ package upgrade fee will be applied



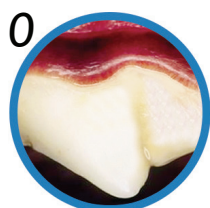
Monthly payment options are available

4 Locations to Better Serve You

Meridian • North Meridian/Eagle • Nampa • Middleton

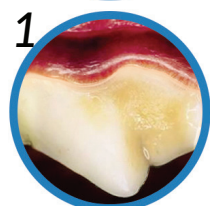
Calculus Index Score

Canine



No observable calculus* and the gums are pink and healthy.

- Dental Home Care Plan



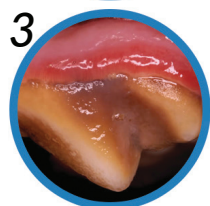
Scattered calculus* covering less than 1/3 of the tooth but NOT on the gum line. Gums are still pink and healthy.

- Dental Home Care Plan



Calculus* covering between 1/3 to 2/3 of the tooth. Calculus* is on the gum line. Gums are inflamed with gingivitis.

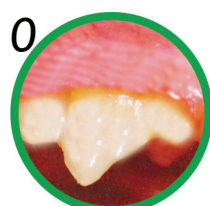
- Dental cleaning strongly recommended
- Dental Home Care Plan



Calculus* covering greater than 2/3 of the tooth and is on the gum line. Gums are inflamed. Likely cast of periodontal disease.

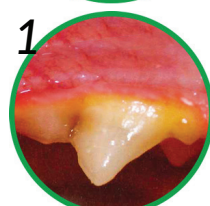
- Dental cleaning strongly recommended with possible tooth extraction/oral surgery
- Dental Home Care Plan

Feline



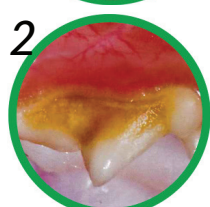
No observable calculus* and the gums are pink and healthy.

- Dental Home Care Plan



Scattered calculus* covering less than 1/3 of the tooth but NOT on the gum line. Gums are still pink and healthy.

- Dental Home Care Plan



Calculus* covering between 1/3 to 2/3 of the tooth. Calculus* is on the gum line. Gums are inflamed with gingivitis.

- Dental cleaning strongly recommended
- Dental Home Care Plan



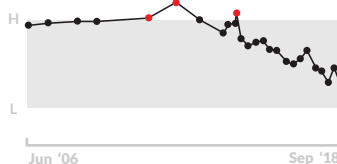
Calculus covering greater than 2/3 of the tooth and is on the gum line. Gums are inflamed. Likely cast of periodontal disease.

- Dental cleaning strongly recommended with possible tooth extraction/oral surgery
- Dental Home Care Plan

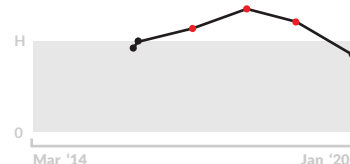
*Calculus is calcified plaque

Trending Values

Hematocrit



IDEXX SDMA



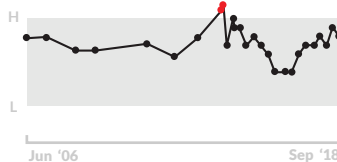
IDEXX SDMA



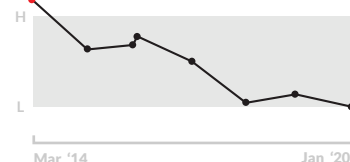
Creatinine



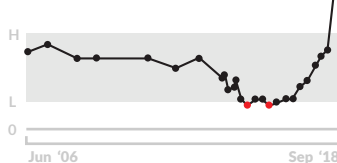
Creatinine



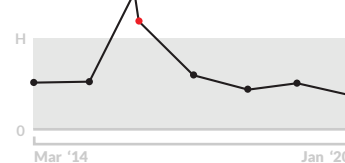
BUN



BUN



ALT



ALP

